



# Extensions for Steinberg DAW Owner's Manual (for MOTIF XS series)

## Table of Contents

About Extensions for Steinberg DAW .....	2
What Extensions for Steinberg DAW can do .....	2
■ Auto setting of Audio Driver.....	2
■ Audio/MIDI Port with device name (for AI Driver/mLAN Driver).....	2
■ Auto settings of Remote Device .....	3
■ Project templates with Input/Output Bus settings .....	4
■ Song import from MOTIF XS6/7/8 .....	5
Troubleshooting.....	6

## SPECIAL NOTICES

- The software and this manual are the exclusive copyrights of Yamaha Corporation.
- Please read carefully the Software Licensing Agreement at the end of “Extensions for Steinberg DAW Installation Guide” before installing the application.
- Copying of the software or reproduction of this manual in whole or in part by any means is expressly forbidden without the written consent of the manufacturer.
- Yamaha makes no representations or warranties with regard to the use of the software and documentation and cannot be held responsible for the results of the use of this manual and the software.
- Future upgrades of application and system software and any changes in specifications and functions will be announced separately.
- The illustrations and LCD screens as shown in this manual are for instructional purposes only, and may appear somewhat different from those on your instrument.
- For information about the latest information of Extensions for Steinberg DAW, check the web site below.  
<http://www.yamahasyth.com/download/>
- This product incorporates and bundles computer programs and contents in which Yamaha owns copyrights or with respect to which it has license to use others' copyrights. Such copyrighted materials include, without limitation, all computer software and sound recordings. Any unauthorized use of such programs and contents outside of personal use is not permitted under relevant laws. Any violation of copyright has legal consequences. DON'T MAKE, DISTRIBUTE OR USE ILLEGAL COPIES.
- Copying of the commercially available musical data including but not limited to MIDI data and/or audio data is strictly prohibited except for your personal use.
- Cubase is the registered trademarks of Steinberg Media Technologies GmbH..
- Windows is the registered trademarks of Microsoft® Corporation.
- Apple, Mac and Macintosh are trademarks of Apple Inc., registered in the U.S. and other countries.
- The company names and product names in this manual are the trademarks or registered trademarks of their respective companies.

## About Extensions for Steinberg DAW

“Extensions for Steinberg DAW” is a set of program plug-ins and project templates developed by Yamaha to enhance the functions of Steinberg DAW software. Simply by installing Extensions for Steinberg DAW and connecting the MOTIF XS series (MOTIF XS6/7/8 and MOTIF-RACK XS) to your computer via an IEEE1394 cable, you can take advantage of various features which enable you to link Cubase (the Steinberg DAW) with the MOTIF XS.

This manual covers situations when connecting the MOTIF XS series to a computer to which Cubase 4 / Cubase Studio 4 / Cubase Essential 4 / Cubase AI4 and Extensions for Steinberg DAW have already been installed. Keep in mind that you will need a USB storage device or you will need to connect the MOTIF XS to a computer via ETHERNET when using the Song Import feature.

### NOTE

- The optional mLAN16E2 should be installed to the MOTIF XS6, MOTIF XS7 or MOTIF-RACK XS when using the features (except for “Song Import”) enabled by installing Extensions for Steinberg DAW. This manual assumes that the mLAN16E2 has been already installed to the MOTIF XS6, MOTIF XS7 or MOTIF-RACK XS.
- The version of Cubase 4 should be 4.0.2 or higher for using the Song Import feature.

## What Extensions for Steinberg DAW can do

Simply by installing Extensions for Steinberg DAW, you can utilize the following features when combining Cubase 4 / Cubase Studio 4 / Cubase Essential 4 / Cubase AI4 with the MOTIF XS series.

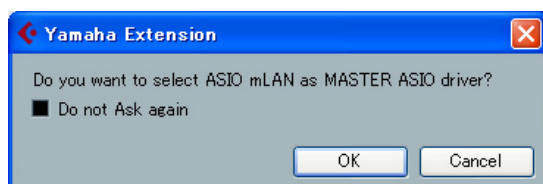
- Auto setting of Audio Driver
- Audio/MIDI Port with device name
- Auto settings of Remote Device (MOTIF XS6/7/8 only)
- Project templates with Input/Output Bus settings
- Song Import from MOTIF XS6/7/8

### NOTE

- Make sure to install Cubase 4 / Cubase Studio 4 / Cubase Essential 4 / Cubase AI4 before installing Extensions for Steinberg DAW. This is necessary because the Project Template file for the MOTIF XS6/7/8 and MOTIF-RACK XS must be installed to the certain folder to which created via the Cubase installation.

### ■ Auto setting of Audio Driver

With Extensions for Steinberg DAW installed, you can set the Audio Driver of Cubase to the Driver of Extensions for Steinberg DAW (ASIO mLAN) by clicking [OK] on the following popup dialog box that appears when starting Cubase.



### NOTE

- Before starting Cubase, connect the MOTIF XS series device to a computer via an IEEE1394 cable then turn on the power of the MOTIF XS series to properly enable this feature.

### ■ Audio/MIDI Port with device name (for AI Driver/mLAN Driver)

With Extensions for Steinberg DAW installed, the Audio/MIDI Ports of AI Driver/mLAN Driver including the device name “MOTIF XS” will be indicated on the Device Setting window in Cubase, letting you intuitively set the device setting. “MOTIF XS Main L” is shown as an Audio Port while “MOTIF XS MIDI IN” is shown as a MIDI Port, for example. For details, see the next page.

### NOTE

- Before starting Cubase, connect the MOTIF XS series device to a computer via an IEEE1394 cable then turn on the power of the MOTIF XS series to properly enable this feature.
- Any name without a device name like “mLAN 10” will be assigned to a port that is not used by the MOTIF XS series.
- When connecting a MOTIF XS series instrument to the computer via the Yamaha Steinberg FW Driver, The original port names provided by the Driver (e.g., “MOTIF XS6 Remote”) will be indicated.
- The Port names are automatically set as listed below each time you start Cubase, even if you change the Audio/MIDI Port names of the Driver supporting the Extensions for Steinberg DAW.

## For MOTIF XS

MIDI port number of MOTIF XS	IN (Computer ← MOTIF XS)	OUT (Computer → MOTIF XS)
1	MOTIF XS	MOTIF XS
2	MOTIF XS Remote	MOTIF XS Remote
3	MOTIF XS MIDI IN	MOTIF XS MIDI OUT

Audio port number of MOTIF XS	IN (Computer ← MOTIF XS)	OUT (Computer → MOTIF XS)
1	MOTIF XS Main L	MOTIF XS Main L
2	MOTIF XS Main R	MOTIF XS Main R
3	MOTIF XS 1	MOTIF XS mLAN L
4	MOTIF XS 2	MOTIF XS mLAN R
5	MOTIF XS 3	MOTIF XS Asgn L
6	MOTIF XS 4	MOTIF XS Asgn R
7	MOTIF XS 5	—
8	MOTIF XS 6	—
9	MOTIF XS 7	—
10	MOTIF XS 8	—
11	MOTIF XS 9	—
12	MOTIF XS 10	—
13	MOTIF XS 11	—
14	MOTIF XS 12	—
15	MOTIF XS 13	—
16	MOTIF XS 14	—

## For MOTIF-RACK XS

MIDI port number of MOTIF-RACK XS	IN (Computer ← MOTIF-RACK XS)	OUT (Computer → MOTIF-RACK XS)
1	MOTIF-RACK XS	MOTIF-RACK XS
2	—	—
3	MOTIF-RACK XS MIDI IN	MOTIF-RACK XS MIDI OUT

Audio port number of MOTIF-RACK XS	IN (Computer ← MOTIF-RACK XS)	OUT (Computer → MOTIF-RACK XS)
1	MOTIF-RACK XS Main L	MOTIF-RACK XS Main L
2	MOTIF-RACK XS Main R	MOTIF-RACK XS Main R
3	MOTIF-RACK XS 1	MOTIF-RACK XS mLAN L
4	MOTIF-RACK XS 2	MOTIF-RACK XS mLAN R
5	MOTIF-RACK XS 3	MOTIF-RACK XS Asgn L

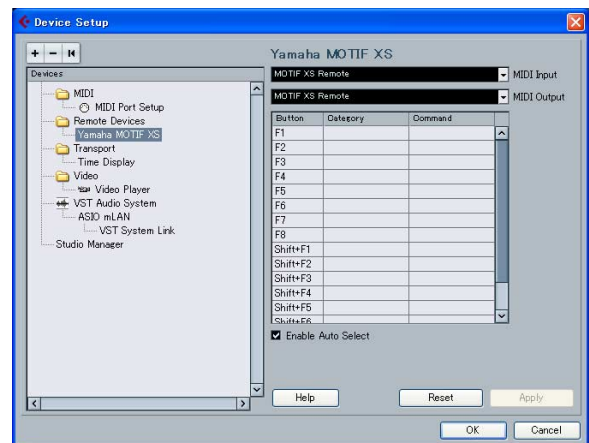
Audio port number of MOTIF-RACK XS	IN (Computer ← MOTIF-RACK XS)	OUT (Computer → MOTIF-RACK XS)
6	MOTIF-RACK XS 4	MOTIF-RACK XS Asgn R
7	MOTIF-RACK XS 5	—
8	MOTIF-RACK XS 6	—
9	MOTIF-RACK XS 7	—
10	MOTIF-RACK XS 8	—
11	MOTIF-RACK XS 9	—
12	MOTIF-RACK XS 10	—
13	MOTIF-RACK XS 11	—
14	MOTIF-RACK XS 12	—
15	MOTIF-RACK XS 13	—
16	MOTIF-RACK XS 14	—

## ■ Auto settings of Remote Device

With Extensions for Steinberg DAW installed, the MOTIF XS connected to a computer via an IEEE1394 cable will be registered as the Remote Device of Cubase. Also, the detailed settings such as MIDI Ports will be set automatically. You can confirm these points by selecting [Devices] → [Device Setup] to call up the Device Setup dialog box.

For details about function assignments, refer to the Owner's Manual and Data List 2 of the MOTIF XS.

The MOTIF-RACK XS cannot be set as a Remote Device.



The Remote Device name shown in Cubase and the MIDI Port name are as follows:

**Remote Device name** : Yamaha MOTIF XS  
**MIDI In and Out Port name** : MOTIF XS Remote

### NOTE

- Even if the MIDI Port is changed, it will be reset to the above one when Cubase is restarted.
- The Remote Control function is available also when the MOTIF XS is connected to a computer via a USB cable. In this case, click [+] from the Device Setup window to call up the Device List, and then select "Yamaha MOTIF XS." You will also need to set the MIDI Ports manually in this case.

In the initial setting, “All MIDI Inputs” may be applied to the MOTIF XS Remote port. This means that MIDI messages generated by operating Remote Controls such as Transport Control on the MOTIF XS panel may be recorded to a track of a Cubase Project. You will need to remove the “All MIDI Inputs” from “MOTIF XS Remote” via the following instructions so that MIDI messages unnecessary for Song creation are not recorded to a track of a Cubase Project.

1. Select [Devices] → [Device Setup] to call up the Device Setup dialog box.
2. Select “MIDI Port Setup” from the Device column.
3. Remove the checkmark from the “All Inputs” column in the “mLAN MIDI In/MOTIF XS remote” row.
4. Click [OK] to close the Device Setup dialog box

#### NOTE

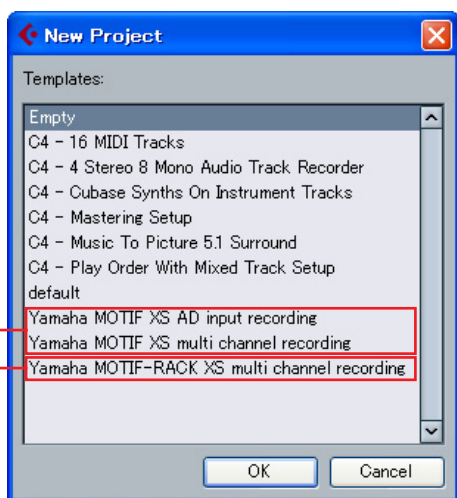
- This setting will be maintained the next time you start up Cubase.
- Please refer to the Cubase Operation Guide for more information on setting up Cubase parameters.

## ■ Project templates with Input/Output Bus settings

With Extensions for Steinberg DAW installed, convenient Project templates for the MOTIF XS and MOTIF-RACK XS will be installed to Cubase. Each of these templates includes the appropriate settings for the Input/Output buses of the VST Connection, meaning that you can start multi-channel recording or AD input recording smoothly by selecting one of the templates to create a new Project, without having to set Audio Ports and Buses manually.

#### NOTE

- Set the AD Output of the MOTIF XS series to “m13&14” by using the Editor or instrument so that the setup of the Project Template is equivalent to the setup of the MOTIF XS.
- Selecting a different Project Template will overwrite the current settings of the Input/Output buses.



Project templates for MOTIF-RACK XS

Project templates for MOTIF XS6/7/8

## Project templates for MOTIF XS6/7/8

### • Yamaha MOTIF XS multi channel recording

When this template is selected, audio outputs from respective channels of the MOTIF XS will be input to the respective audio tracks of Cubase simultaneously.

The correspondences between the Input/Output Buses and Device Port on the VST connection window are as follows:

Cubase Inputs	
Input Bus	Device Port
MOTIF XS Main	MOTIF XS Main L
	MOTIF XS Main R
MOTIF XS 1/2	MOTIF XS 1
	MOTIF XS 2
MOTIF XS 3/4	MOTIF XS 3
	MOTIF XS 4
MOTIF XS 5/6	MOTIF XS 5
	MOTIF XS 6
MOTIF XS 7/8	MOTIF XS 7
	MOTIF XS 8
MOTIF XS 9/10	MOTIF XS 9
	MOTIF XS 10
MOTIF XS 11/12	MOTIF XS 11
	MOTIF XS 12
MOTIF XS AD in	MOTIF XS 13
	MOTIF XS 14

Cubase Outputs	
Output Bus	Device Port
MOTIF XS Main	MOTIF XS Main L
	MOTIF XS Main R
MOTIF XS Asgn	MOTIF XS Asgn L
	MOTIF XS Asgn R
MOTIF XS mLAN	MOTIF XS mLAN L
	MOTIF XS mLAN R

### • Yamaha MOTIF XS AD Input recording

When this template is selected, audio signals from the A/D Input channel of the MOTIF XS will be input to an audio track of Cubase. This template is convenient when using the MOTIF XS as an external instrument of Cubase. The correspondences between the Input/Output Buses and Device Port on the VST connection window are same as the above table with the exception that only “MOTIF XS AD in” is available as the Input Bus.

### Yamaha MOTIF-RACK XS multi channel recording

When this template is selected, audio outputs from respective channels of the MOTIF-RACK XS will be input to the respective audio tracks of Cubase simultaneously.

The correspondences between the Input/Output Buses and Device Port on the VST connection window are as follows:

Cubase Inputs	
Input Bus	Device Port
MOTIF-RACK XS Main	MOTIF-RACK XS 1
	MOTIF-RACK XS 2
MOTIF-RACK XS 1/2	MOTIF-RACK XS 3
	MOTIF-RACK XS 4
MOTIF-RACK XS 3/4	MOTIF-RACK XS 5
	MOTIF-RACK XS 6
MOTIF-RACK XS 5/6	MOTIF-RACK XS 7
	MOTIF-RACK XS 8
MOTIF-RACK XS 7/8	MOTIF-RACK XS 9
	MOTIF-RACK XS 10
MOTIF-RACK XS 9/10	MOTIF-RACK XS 11
	MOTIF-RACK XS 12
MOTIF-RACK XS 11/12	MOTIF-RACK XS 13
	MOTIF-RACK XS 14
MOTIF-RACK XS 13/14	MOTIF-RACK XS 15
	MOTIF-RACK XS 16

Cubase Outputs	
Output Bus	Device Port
MOTIF-RACK XS Main	MOTIF-RACK XS Main L
	MOTIF-RACK XS Main R
MOTIF-RACK XS Asgn	MOTIF-RACK XS Asgn L
	MOTIF-RACK XS Asgn R
MOTIF-RACK XS mLAN	MOTIF-RACK XS mLAN L
	MOTIF-RACK XS mLAN R

## ■ Song import from MOTIF XS6/7/8

With Extensions for Steinberg DAW installed, Song data recorded to the tracks of the MOTIF XS6/7/8 can be imported to a Project in Cubase on your computer. Keep in mind that audio data included in the song as well as MIDI events can be imported while the Mixing setup cannot be imported. Song data of the MOTIF-RACK XS can not be imported.

Follow the instructions below:

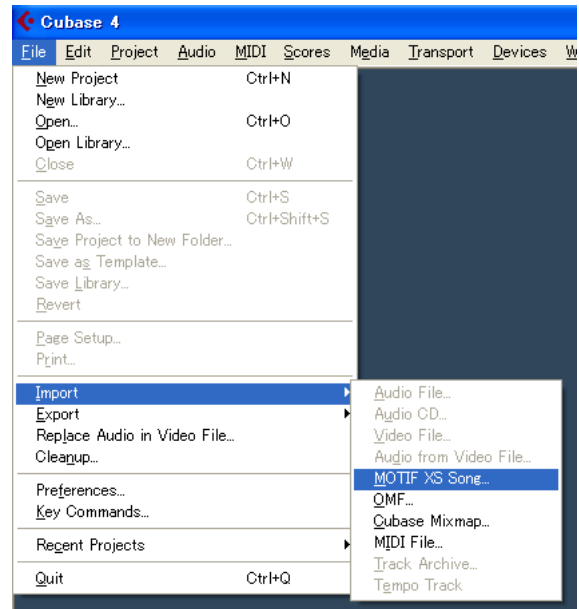
- 1 In the File mode of the MOTIF XS, save all user data created on the MOTIF XS (with the File Type set to “All”) to the USB storage device connected to the USB TO DEVICE connector. Next, remove the USB storage device from the MOTIF XS, and then insert it to the USB connector of the computer.**

The file with the extension “.X0A” will be saved to the USB storage device.

If the MOTIF XS and your computer are connected to the same Ethernet network, you can save the data (the file with the extension “.X0A”) to the hard disk drive of your computer.

- 2 On your computer, select [File] → [Import] → [MOTIF XS Song...].**

The “Import MOTIF XS Song” dialog box appears.



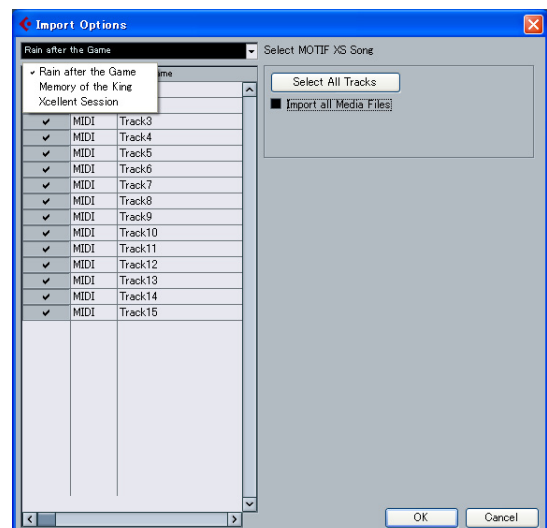
- 3 From the “Import MOTIF XS Song” dialog box, select the file saved in step 1 above, and then click [Open].**

The “Select directory” dialog box appears.

- 4 From the “Select directory” dialog box, select the destination folder to which the project file of Cubase is to be saved, then click [OK].**

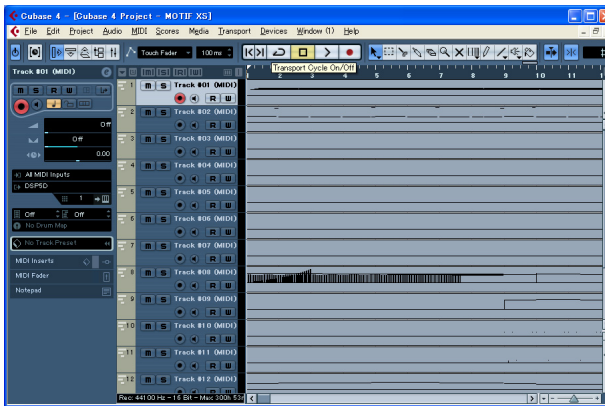
The “Import Options” dialog box appears.

- 5 From the “Import Options” dialog box, select the song and track(s) to be imported, then click [OK].**





Select the song to be imported from the pull-down menu at the top of this dialog box, then select the specific tracks of the selected song. If you want to import the entire song, click [Select All Tracks]. After selecting a song and tracks, click [OK] to execute the actual Import operation. After completing the Import operation, each track data of the selected song will be imported to each track in the project file of Cubase.



## How the MOTIF XS song is to be imported

### About the imported file and project

- Keep in mind that only the “All” type (file extension: X0A) can be imported to a Cubase project.
- The sample rate of the project created via the Song Import will be set to 44.1 kHz, meaning that the Sample Voice created on the MOTIF XS via a sample rate other than 44.1 kHz will not play via the correct pitch in the Cubase project. If you want to import a song with a Sample Voice, make sure to set the sample rate to 44.1 kHz before performing the Sampling operation.

### About MIDI Tracks

- The MIDI tracks in the MOTIF XS song will be imported to a project as MIDI tracks. Each track of the project will be assigned the same MIDI Transmit Channel as that on the original MOTIF XS song.
- The track using Voices that contains User Waveforms obtained in the Voice/Performance mode via the Sampling function is imported as a MIDI track. In other words, the track which does not use a Sample Voice will be imported as a MIDI track.
- The Mixing setup of the MOTIF XS song will not be imported, resulting that the Volume and Pan of each MIDI track are set to “Off” when the song is imported.

### About Audio Tracks

- The Audio track (including the Program Change which specifies the Sample Voice) in the MOTIF XS song will be imported to a project as the Audio track.
- The Mixing setup will not be imported, resulting that all the Volume values are set to 0 dB, all the Pan values are set to “C” and all the EQ shapes are reset to flat in the Audio track when the song is imported.
- Among all the Samples comprising a Waveform assigned to a Sample Voice used by the MOTIF XS song, only the Samples of the Key Bank including the note number recorded to the track will be imported to a Project when the box of “Import all Media Files” is not checked. If you want to import all the Samples, check the box “Import all Media Files.”

### Others

- The Song Import function supports only the data recorded to each track of the MOTIF XS song. Note that the Mixing setup will not be imported to a Cubase project. If you want to apply the Mixing setup to the MOTIF XS, use the MOTIF XS Editor within Cubase. Start Studio Manager, followed by the MOTIF XS Editor within Cubase. Next, open the “All” type file (extension: .X0A), select the song same as that selected when executing the Song Import, and then execute the Sync function.
- The Song Import function does not support Pattern data and Arpeggio data.
- Song data imported to a Project cannot be exported back to the MOTIF XS.

## Troubleshooting

### ■ Cannot control Cubase from the MOTIF XS panel

- Make sure that the MOTIF XS is properly connected to the computer via an IEEE1394 cable.
- Confirm the version of Cubase installed to your computer. Versions older than 4 such as Cubase SX3 does not support the Remote Control function of the MOTIF XS.
- Confirm whether or not “Yamaha MOTIF XS” is registered as a Remote Device and “MOTIF XS Remote” has been selected as the MIDI In/Out Port from the Device Setup window called via [Devices] → [Device Setup].

#### (Only for Macintosh users)

- When an external MIDI device is added to the device “mLAN Network” in the Audio MIDI Setup window (called up by selecting [Application] → [Utilities]), the MIDI input/output port for the remote device may not be set automatically in Cubase. In this case, remove all the external devices in the Audio MIDI Setup window, or manually set the MIDI input/output port for the remote device to the appropriate one in the Device Setup window in Cubase.

### ■ Cannot find the Project Templates

- Confirm whether or not Extensions for Steinberg DAW has been installed properly.
- If you install Extensions for Steinberg DAW before installing Cubase, the Project Template files will be installed to the following path. Copy these files from the following path to the path where Cubase has been installed.

#### Windows:

C:\Program Files\Common Files\Steinberg\Project Templates

#### Mac:

/Library/Application Support/Steinberg/Project Templates

### ■ Cannot import a MOTIF XS song

- Make sure to use Cubase of version 4.0.2 or higher.
- If you cannot select a song from the “Import Options” dialog box or you find the imported song does not have any data, the file of “All” type may be saved without storing the recorded song on the MOTIF XS. Make sure to store the recorded song on the MOTIF XS before performing the Save operation.

For details of products, please contact your nearest Yamaha representative or the authorized distributor listed below.

Pour plus de détails sur les produits, veuillez-vous adresser à Yamaha ou au distributeur le plus proche de vous figurant dans la liste suivante.

Die Einzelheiten zu Produkten sind bei Ihrer unten aufgeführten Niederlassung und bei Yamaha Vertragshändlern in den jeweiligen Bestimmungsländern erhältlich.

Para detalles sobre productos, contacte su tienda Yamaha más cercana o el distribuidor autorizado que se lista debajo.

## NORTH AMERICA

### CANADA

**Yamaha Canada Music Ltd.**  
135 Milner Avenue, Scarborough, Ontario,  
M1S 3R1, Canada  
Tel: 416-298-1311

### U.S.A.

**Yamaha Corporation of America**  
6600 Orangethorpe Ave., Buena Park, Calif. 90620,  
U.S.A.  
Tel: 714-522-9011

## CENTRAL & SOUTH AMERICA

### MEXICO

**Yamaha de México S.A. de C.V.**  
Calz. Javier Rojo Gómez #1149,  
Col. Guadalupe del Moral  
C.P. 09300, México, D.F., México  
Tel: 55-5804-0600

### BRAZIL

**Yamaha Musical do Brasil Ltda.**  
Rua Joaquim Floriano, 913 - 4º andar, Itaim Bibi,  
CEP 04534-013 Sao Paulo, SP. BRAZIL  
Tel: 011-3704-1377

### ARGENTINA

**Yamaha Music Latin America, S.A.**  
**Sucursal de Argentina**  
Olga Cossetтини 1553, Piso 4 Norte  
Madero Este-C1107CEK  
Buenos Aires, Argentina  
Tel: 011-4119-7000

### PANAMA AND OTHER LATIN AMERICAN COUNTRIES/ CARIBBEAN COUNTRIES

**Yamaha Music Latin America, S.A.**  
Torre Banco General, Piso 7, Urbanización Marbella,  
Calle 47 y Aquilino de la Guardia,  
Ciudad de Panamá, Panamá  
Tel: +507-269-5311

## EUROPE

### THE UNITED KINGDOM

**Yamaha Music U.K. Ltd.**  
Sherbourne Drive, Tilbrook, Milton Keynes,  
MK7 8BL, England  
Tel: 01908-366700

### IRELAND

**Danfay Ltd.**  
61D, Sallynoggin Road, Dun Laoghaire, Co. Dublin  
Tel: 01-2859177

### GERMANY

**Yamaha Music Central Europe GmbH**  
Siemensstraße 22-34, 25462 Rellingen, Germany  
Tel: 04101-3030

### SWITZERLAND/LIECHTENSTEIN

**Yamaha Music Central Europe GmbH,  
Branch Switzerland**  
Seefeldstrasse 94, 8008 Zürich, Switzerland  
Tel: 01-383 3990

### AUSTRIA

**Yamaha Music Central Europe GmbH,  
Branch Austria**  
Schleiergasse 20, A-1100 Wien, Austria  
Tel: 01-60203900

### CZECH REPUBLIC/SLOVAKIA/ HUNGARY/SLOVENIA

**Yamaha Music Central Europe GmbH,  
Branch Austria, CEE Department**  
Schleiergasse 20, A-1100 Wien, Austria  
Tel: 01-602039025

### POLAND

**Yamaha Music Central Europe GmbH  
Sp.z. o.o. Oddział w Polsce**  
ul. 17 Stycznia 56, PL-02-146 Warszawa, Poland  
Tel: 022-868-07-57

### THE NETHERLANDS/ BELGIUM/LUXEMBOURG

**Yamaha Music Central Europe GmbH,  
Branch Benelux**  
Clarissenhof 5-b, 4133 AB Vianen, The Netherlands  
Tel: 0347-358 040

### FRANCE

**Yamaha Musique France**  
BP 70-77312 Marne-la-Vallée Cedex 2, France  
Tel: 01-64-61-4000

### ITALY

**Yamaha Musica Italia S.P.A.**  
**Combo Division**  
Viale Italia 88, 20020 Lainate (Milano), Italy  
Tel: 02-935-771

### SPAIN/PORTUGAL

**Yamaha Música Ibérica, S.A.**  
Ctra. de la Coruna km. 17, 200, 28230  
Las Rozas (Madrid), Spain  
Tel: 91-639-8888

### GREECE

**Philippos Nakas S.A. The Music House**  
147 Skiathou Street, 112-55 Athens, Greece  
Tel: 01-228 2160

### SWEDEN

**Yamaha Scandinavia AB**  
J. A. Wettergrens Gata 1, Box 30053  
S-400 43 Göteborg, Sweden  
Tel: 031 89 34 00

### DENMARK

**YS Copenhagen Liaison Office**  
Generatorvej 6A, DK-2730 Herlev, Denmark  
Tel: 44 92 49 00

### FINLAND

**F-Musiikki Oy**  
Kluuvikatu 6, P.O. Box 260,  
SF-00101 Helsinki, Finland  
Tel: 09 618511

### NORWAY

**Norsk filial av Yamaha Scandinavia AB**  
Grini Næringspark 1, N-1345 Østerås, Norway  
Tel: 67 16 77 70

### ICELAND

**Skifan HF**  
Skeifan 17 P.O. Box 8120, IS-128 Reykjavik, Ice-  
land  
Tel: 525 5000

### RUSSIA

**Yamaha Music (Russia)**  
Office 4015, entrance 2, 21/5 Kuznetskii  
Most street, Moscow, 107996, Russia  
Tel: 495 626 0660

### OTHER EUROPEAN COUNTRIES

**Yamaha Music Central Europe GmbH**  
Siemensstraße 22-34, 25462 Rellingen, Germany  
Tel: +49-4101-3030

## AFRICA

**Yamaha Corporation,  
Asia-Pacific Music Marketing Group**  
Nakazawa-cho 10-1, Naka-ku, Hamamatsu,  
Japan 430-8650  
Tel: +81-53-460-2312

## MIDDLE EAST

### TURKEY/CYPRUS

**Yamaha Music Central Europe GmbH**  
Siemensstraße 22-34, 25462 Rellingen, Germany  
Tel: 04101-3030

### OTHER COUNTRIES

**Yamaha Music Gulf FZE**  
LOB 16-513, P.O.Box 17328, Jubel Ali,  
Dubai, United Arab Emirates  
Tel: +971-4-881-5868

## ASIA

### THE PEOPLE'S REPUBLIC OF CHINA

**Yamaha Music & Electronics (China) Co.,Ltd.**  
25/F., United Plaza, 1468 Nanjing Road (West),  
Jingan, Shanghai, China  
Tel: 021-6247-2211

### HONG KONG

**Tom Lee Music Co., Ltd.**  
11/F., Silvercord Tower 1, 30 Canton Road,  
Tsimshatsui, Kowloon, Hong Kong  
Tel: 2737-7688

### INDIA

**Yamaha Music India Pvt. Ltd.**  
5F Ambience Corporate Tower Ambience Mall Complex  
Ambience Island, NH-8, Gurgaon-122001, Haryana, India  
Tel: 0124-466-5551

### INDONESIA

**PT. Nusantara Music Indonesia (Distributor)**  
**PT. Nusantara**  
Gedung Yamaha Music Center, Jalan Jend. Gatot  
Subroto Kav. 4, Jakarta 12930, Indonesia  
Tel: 21-520-2577

### KOREA

**Yamaha Music Korea Ltd.**  
8F, 9F, Dongsung Bldg. 158-9 Samsung-Dong,  
Kangnam-Gu, Seoul, Korea  
Tel: 080-004-0022

### MALAYSIA

**Yamaha Music Malaysia, Sdn., Bhd.**  
Lot 8, Jalan Perbandaran, 47301 Kelana Jaya,  
Petaling Jaya, Selangor, Malaysia  
Tel: 3-78030900

### PHILIPPINES

**Yupangco Music Corporation**  
339 Gil J. Puyat Avenue, P.O. Box 885 MCPO,  
Makati, Metro Manila, Philippines  
Tel: 819-7551

### SINGAPORE

**Yamaha Music Asia Pte., Ltd.**  
#03-11 A-Z Building  
140 Paya Lebar Road, Singapore 409015  
Tel: 747-4374

### TAIWAN

**Yamaha KHS Music Co., Ltd.**  
3F, #6, Sec.2, Nan Jing E. Rd. Taipei.  
Taiwan 104, R.O.C.  
Tel: 02-2511-8688

### THAILAND

**Siam Music Yamaha Co., Ltd.**  
4, 6, 15 and 16<sup>th</sup> floor, Siam Motors Building,  
891/1 Rama 1 Road, Wangmai,  
Pathumwan, Bangkok 10330, Thailand  
Tel: 02-215-2626

### OTHER ASIAN COUNTRIES

**Yamaha Corporation,  
Asia-Pacific Music Marketing Group**  
Nakazawa-cho 10-1, Naka-ku, Hamamatsu,  
Japan 430-8650  
Tel: +81-53-460-2317

## OCEANIA

### AUSTRALIA

**Yamaha Music Australia Pty. Ltd.**  
Level 1, 99 Queensbridge Street, Southbank,  
Victoria 3006, Australia  
Tel: 3-9693-5111

### NEW ZEALAND

**Music Works LTD**  
P.O.BOX 6246 Wellesley, Auckland 4680,  
New Zealand  
Tel: 9-634-0099

### COUNTRIES AND TRUST TERRITORIES IN PACIFIC OCEAN

**Yamaha Corporation,  
Asia-Pacific Music Marketing Group**  
Nakazawa-cho 10-1, Naka-ku, Hamamatsu,  
Japan 430-8650  
Tel: +81-53-460-2312

## HEAD OFFICE

**Yamaha Corporation, Pro Audio & Digital Musical Instrument Division**  
Nakazawa-cho 10-1, Naka-ku, Hamamatsu, Japan 430-8650  
Tel: +81-53-460-2445